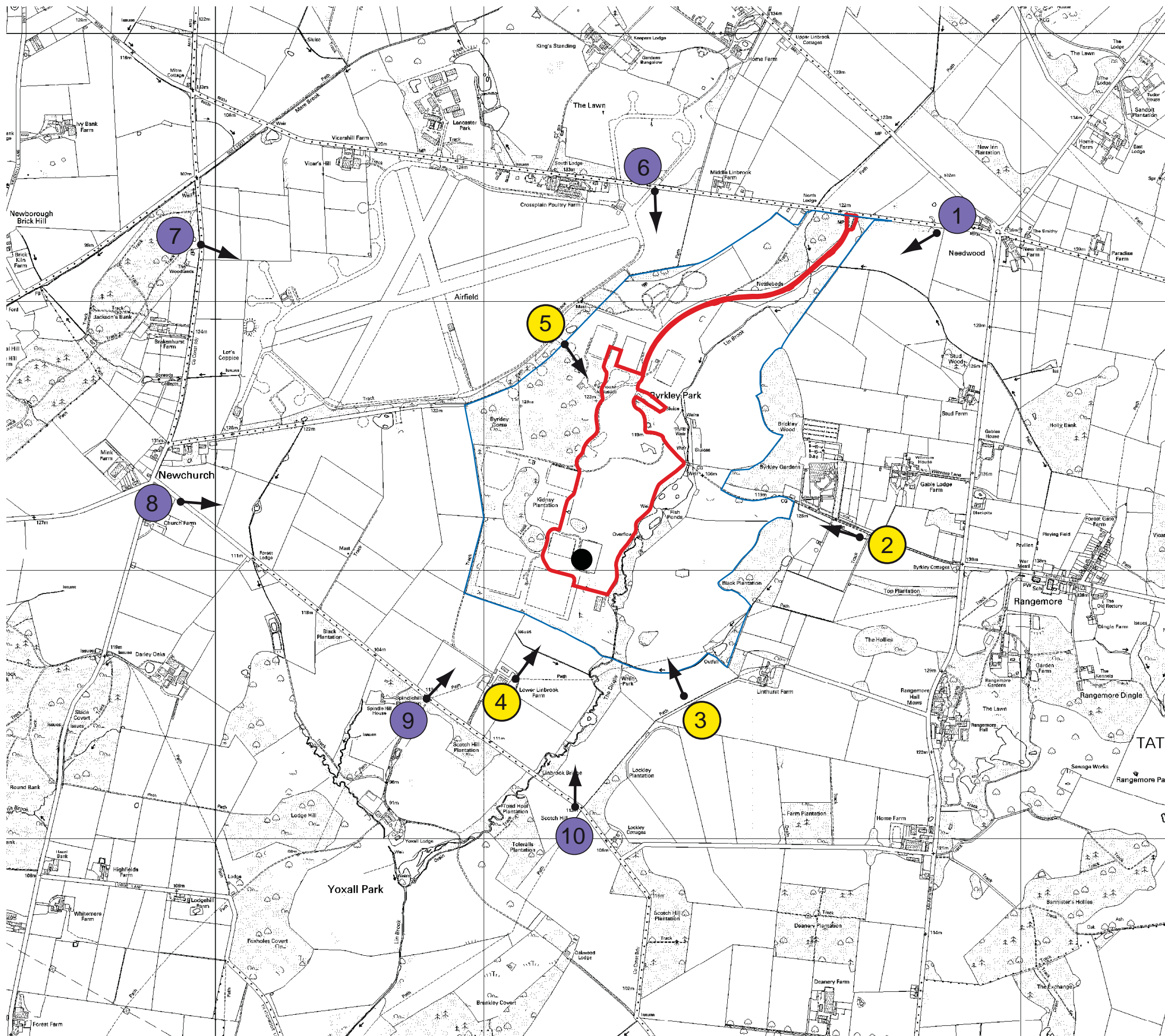




- KEY**
- St Groege's Park (NFC) boundary
  - Revised hotel/sports application
  - Contour
  - Approx. location of buildings with extant permission
  - Trees
  - Clear views of built elements on site
  - Glimpsed/filtered partial views of built elements on site
  - No views of built elements on site

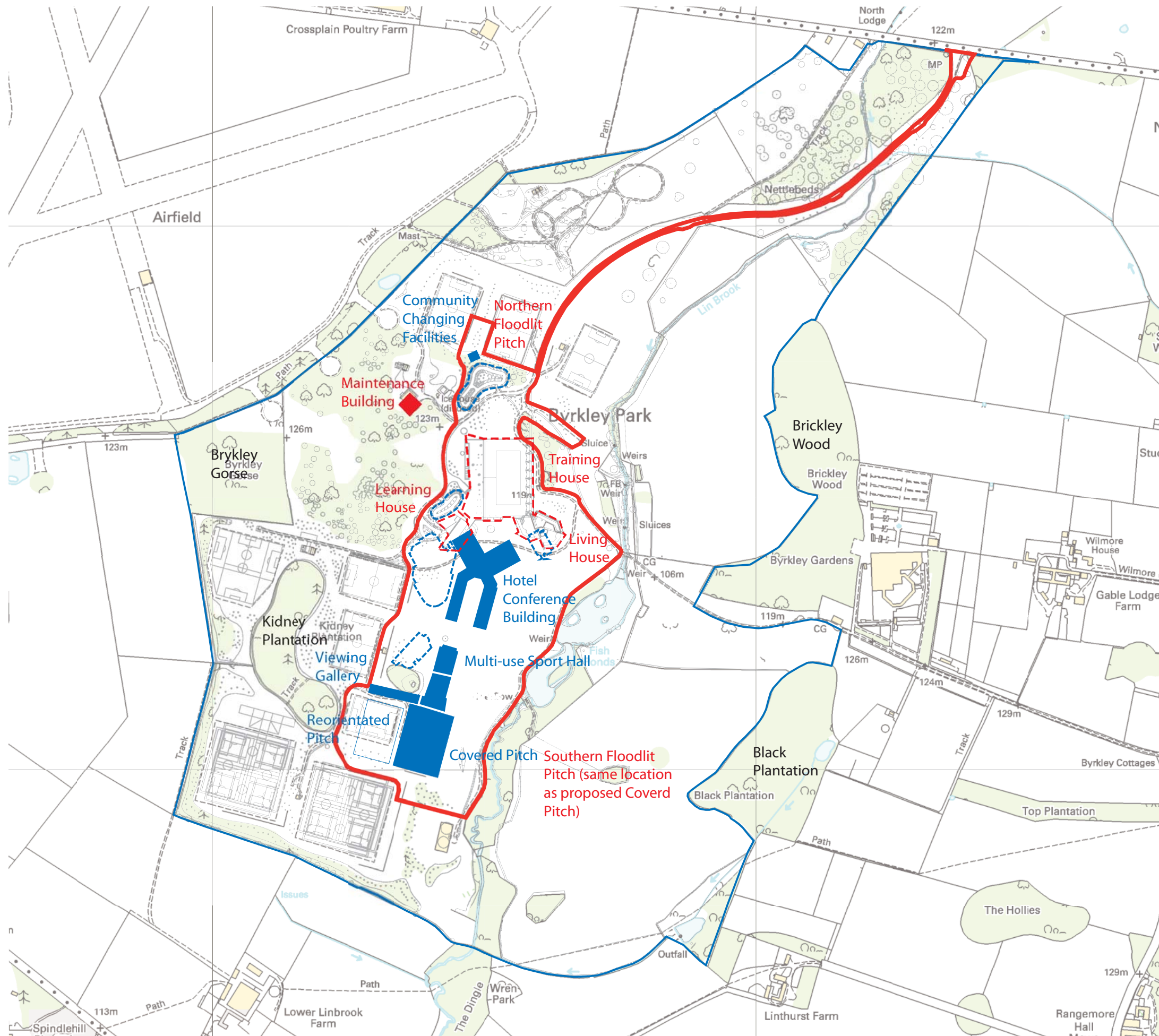
FIGURE E6: BASELINE VISIBILITY ANALYSIS



**KEY**

- St George's Park (NFC) boundary
- Revised hotel/sports application
- Site observation point: indoor football pitch building (108m AOD + 17M above ground level)
- Key representative view (day)
- Key representative view (day and night)

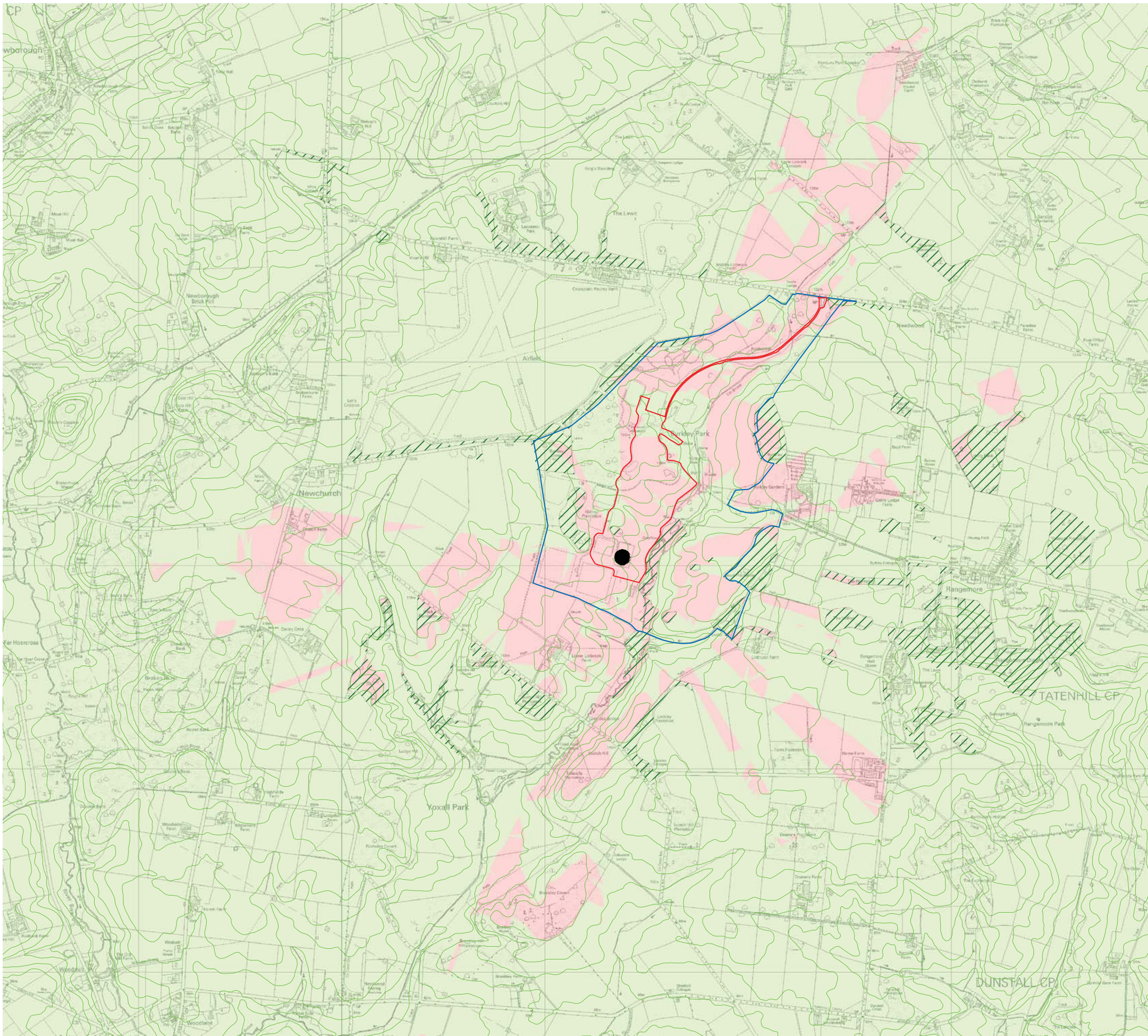
**FIGURE E7: KEY REPRESENTATIVE VIEWS: LOCATION PLAN**



**KEY**

- St George's Park (NFC) boundary
- Revised hotel/sports application
- Approx. location of buildings with extant permission replaced by revised proposal
- Approx. location of buildings with extant permission retained in revised proposal
- Approx. location of revised NFC proposal
- Location of car parking in revised NFC proposal

**FIGURE E8: KEY TO REVISED HOTEL/SPORTS PROPOSAL**



- NFC Boundary
- Site Observation Point:  
indoor football pitch  
building (108m AOD +  
17m above ground level)
- Vegetation Cover  
(15m in elevation)
- Contour (Source  
Ordnance Survey)
- Viewshed Analysis\***
- Land not visible from  
Site Observation Point
- Land visible from  
Site Observation Point
- Revised hotel/sports  
applications

\* Viewshed does not take into consideration obstacles/barriers such as vegetation (unless stated as above) and buildings it is a viewshed based on the terrain solely.

FIGURE E9: GIS ZONE OF VISUAL INFLUENCE - PROPOSED













- KEY**
- NFC boundary 
  - Revised hotel/sports application 
  - Contour 
  - Approx. location of buildings with extant permission replaced by revised proposal 
  - Approx. location of buildings with extant permission retained in revised proposal 
  - Approx. location of revised NFC proposal 
  - Trees 
  - Clear views of built elements on site 
  - Glimpsed/filtered partial views of built elements on site 
  - No views of built elements on site 

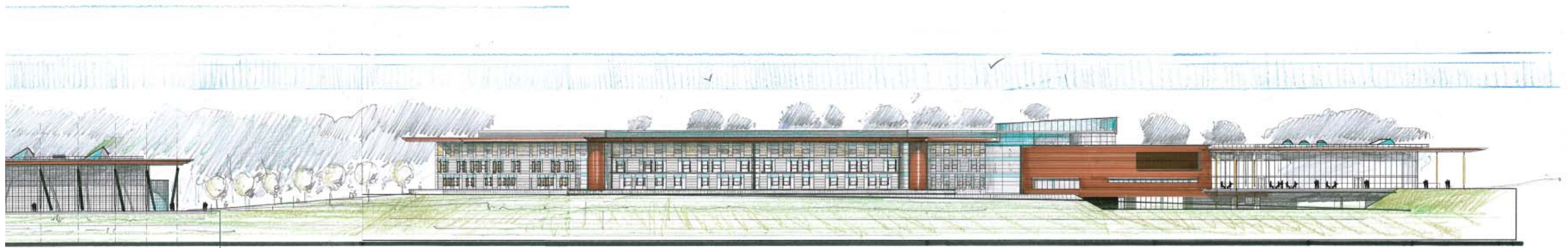
FIGURE E10: HOTEL/SPORTS PROPOSAL VISIBILITY ANALYSIS



**IMAGES OF REVISED HOTEL/  
SPORTS PROPOSAL**



North elevation Hotel and Conference Building



East elevation Hotel and Conference Building



East Elevation of Covered Pitch Office Building and Multi-use Sports Hall





View looking north west to viewing gallery from pitch



View looking towards the main entrance of the Hotel and Conference Building



View looking north to Hotel Conference Building courtyard

## KEY REPRESENTATIVE VIEW IMAGES AND DESCRIPTIONS